

# Tech Talk Friday

## Power Platform Premium

7<sup>th</sup> of June 2024, 2 PM

Adriano Perolini  
SR Partner Solution Architect for  
Business Applications

# Agenda

Agenda
Introduction to Power Platform Premium
Premium Features
Real life use case
Resources
Closing Q&A

# Introduction to Power Platform Premium

# Microsoft Power Platform

A comprehensive development platform – powered by low-code and AI



**Power Apps**

for  
web and mobile  
application  
development



**Power Automate**

for  
process  
or workflow  
automation



**Copilot Studio**

for  
customizing  
Microsoft Copilots  
or building your  
own copilot



**Power Pages**

for  
building secure,  
data-centric  
business websites



**Power BI**

for  
data exploration,  
analytics and  
reporting



**1000+ Data  
connectors**



**AI Builder**



**Dataverse**

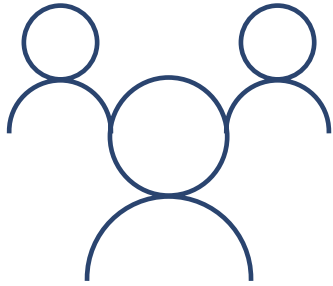


**Power Fx**



**Managed  
Environments**

# Digital Transformation is Powered By People



End Users



Experienced Developers

End users will be creating many more apps than experienced developers in the coming years



# Power Platform Copilot

Copilot **accelerates and simplifies development** and is for everyone. Imagine your solution, describe it in everyday language, and copilot will create it for you via an intuitive and intelligent low code experience.

# Power Platform Copilots



Maker copilots assist

**Prompt:** "I want a ticketing app that connects to a Dataverse table to display, add, edit and delete tickets stored in the table."



App copilots answer

**Prompt:** "How many high risks deals are in my client portfolio this year?"



Build & Extend  
any copilot

**Prompt:** "Create a Power Point presentation based on the numbers and information in the CRM system"



# Dataverse

Reach set of capabilities

**Tables** that represent commonly used concepts and activities across a variety of business & app domains

Ability to **extend** the standard entities by adding **custom columns** and **relationships**

Add **custom tables** to support your scenario and application

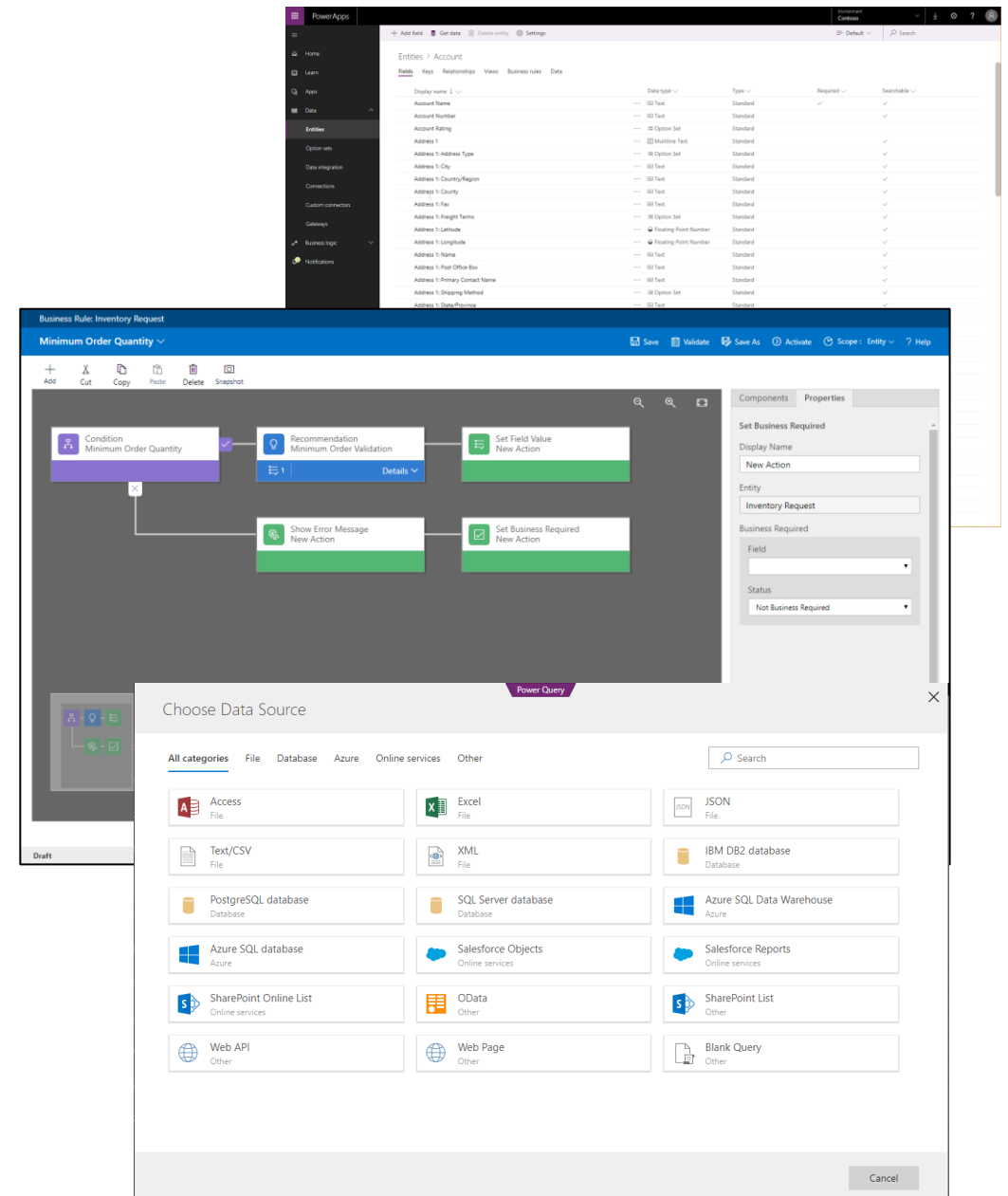
Create **calculated and roll up columns** to provide consistent calculations across apps

Define **business rules and validation** to ensure data quality

Easily **import and synchronize** your data using **Power Query**

Sophisticated **security model** providing row level security and even models hierarchies.

Production ready **pro developer SDK** allowing Dataverse access from any pro-dev application





# SharePoint and Dataverse

## Comparison Areas

- Primary Use Cases
- Volume
- Data Model
- Data & Access
- Data Ingestion & Migration
- Intelligent Processing
- Roles & Permissions

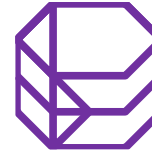


# Primary Use Cases



## Collaboration

- Good choice for **collaborative/productivity scenarios**, where content is expected to be widely shared and edited by multiple parties
- Data is recorded as “List Items” in a SharePoint list. Users can use the SharePoint interface to access the data. Scope of data access is intended to be **broad**.
- Support for collaboration on **unstructured** content, e.g. Documents, images.



## Transactional Records

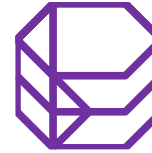
- Good choice for **capturing of business data** as operational records, ready for audit/reporting use.
- Data is recorded as an “Entity record” in the Dataverse. Scope of data access is controlled by Role-based access control.
- Content is expected to be **highly structured**. Unstructured content is supported via File or Image data types and is treated as part of the Entity record.

# Volume



Large volume for latent storage, but low volume for high CRUD operations

- When SharePoint reaches 5,000 items, it is considered a "Large List". **Certain CRUD operations may be prevented**, though indexing and filtered views will allow certain operations in SharePoint pages, but not for external applications accessing its list items.



Very large volume with auto-scale

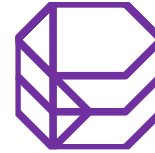
- The Dataverse is backed by multiple Azure SQL Elastic Pools and will automatically scale as required. There is **no theoretical limit** on the volume of data supported.

# Data Model



## Limited lookups

- SharePoint lists **limits to up to 12 look-ups per list**. Look-ups provide a simple relationship by creating references from a list column to another list. The options provided include one-to-one or one-to-many lookups.
- Limited query operations supported, using XML-based CAML query



## Full relational model support

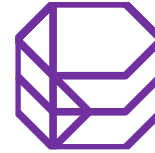
- The Dataverse implements the Common Data Model, which is an **open data model** as part of the Open-Data Initiative (ODI). The data model describes common business entities with a common schema that is understood by any Microsoft Business applications as well as business applications from partners.
- The Dataverse supports one-to-many and many-to-many relationship. This **supports simple to complex relationships**, including what is known as "polymorphic relations".
- Powerful query operations using T-SQL statements or via FetchXML.

# Data & Access



## Via any SharePoint tools or interface

- SharePoint lists can be accessed from SharePoint's native interface, or via any tools that are allowed to connect to SharePoint (e.g legacy tools such as SharePoint Designer, or third-party tools available on the Internet).
- Data export to Excel is exposed as an end-user function.



## Through Power Platform

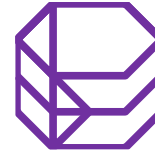
- Data access available through the Power Apps Maker portal or via programmatic interfaces (Rest API). No additional user interface access available for end-users except through Power Apps.
- Data export to Excel is via Power Automate or using Admin functions.
- T-SQL end-point provides read-only access for data professionals using existing tools such as SQL Management Studio.

# Data Ingestion & Migration



## Via scripts and 3rd party tools

- Use of third-party tools to import data from other sources, or via SharePoint PnP scripts, or via Power Automate. Data-shaping capabilities depends on codes or third-party tools.



## Full Power Query capability in Data Flow

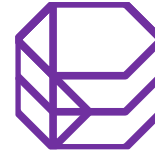
- Data ingestion supported via Power Query, which provides data shaping and transformation as an ETL tool (Extract, Transform and Load).

# Intelligent Processing



## No native capability

- No native AI capabilities built-in. For intelligent analytics, data needs to be extracted and loaded into another platform. Data export require scripting or use of Power Automate, or third-party tools.
- No Direct Query support – data needs to be refreshed on a periodical schedule.



## AI capability available

- Native AI capabilities built in via AI Builder. AI Builder capabilities include prediction models, text classification, sentiment analytics, OCR, and more.
- Links to Azure Data Lake Gen2 with continuous refresh.
- Direct Query support in Power BI for real-time updates.

# Summary



## Use SharePoint if:

1. There is a **collaborative need for the data** – e.g. Documents need to go through co-authoring.
2. **Data volume is relatively small**, no requirement for highly normalized data models.
3. There is **no item-level permissions** across all items. Item-level permission should be exceptions (not norm).
4. Data Access is **not exclusive to the app** and can be accessed via SharePoint's native UI as well.
5. **No requirement for intelligent processing** (e.g. Prediction, duplicate detection, etc.)
6. **Basic analytics requirement** (report and visuals on tabular data structure).



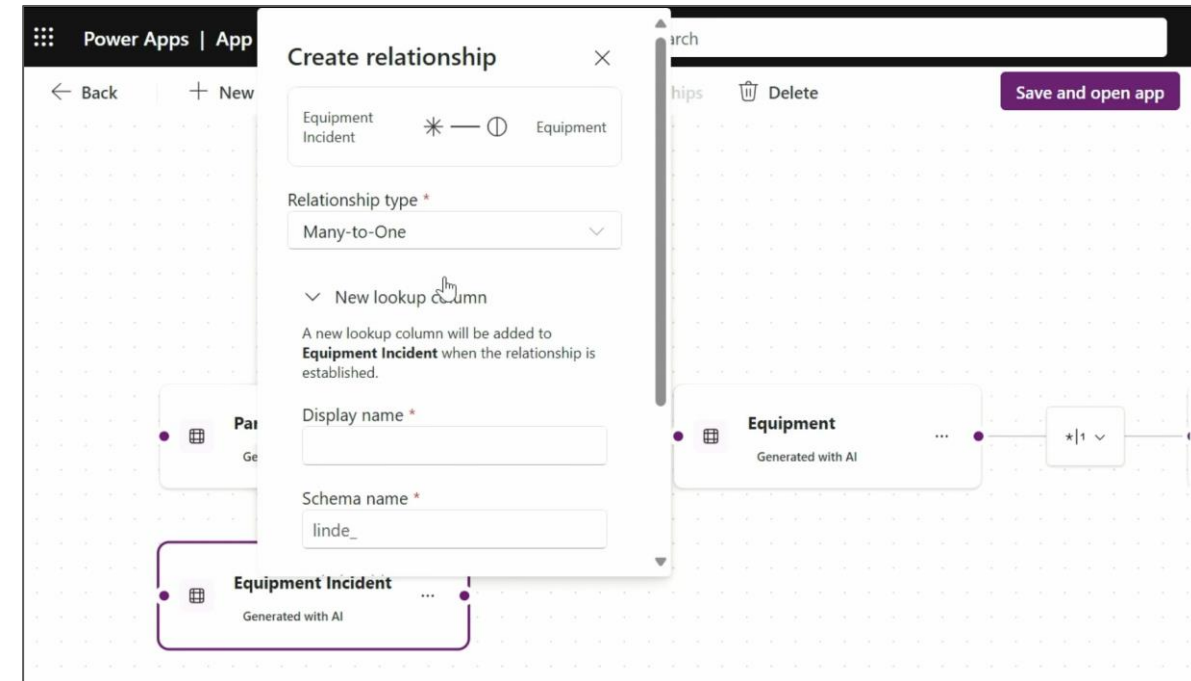
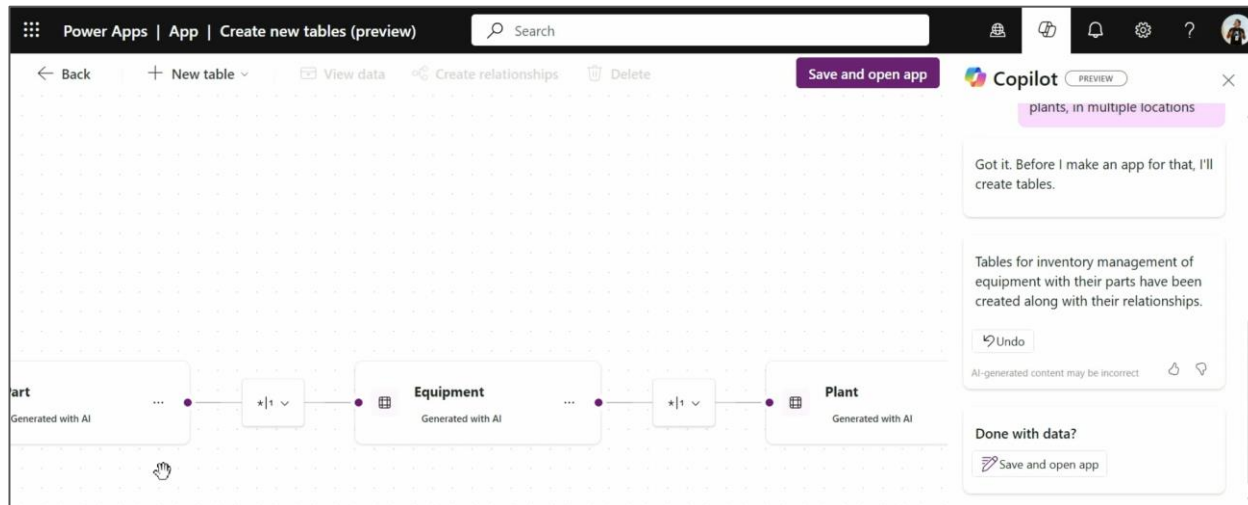
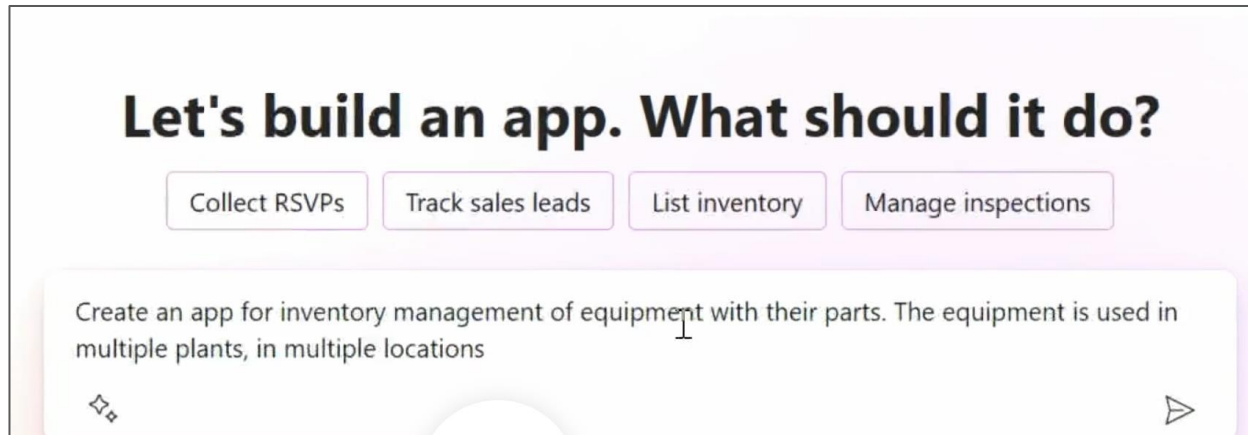
## Use Dataverse if:

1. There is a need for data to be **created and updated frequently**.
2. Data volume can grow **beyond 5,000 records**, and solution can benefit from normalized data models.
3. **Role-based access** control is required.
4. **Data Access is limited** to only the required application interfaces.
5. Solution can benefit from **Artificial Intelligent capabilities**.
6. Solution can benefit from **analytic reporting** through Azure Data Lake.



# Demo of Premium Features

# Maker Copilots Assist



Source: ***Building the apps of the future today with Power Platform and Copilot*** – MS Build Session: **BRK201** [Link](#)

# MS Build 2024 | 20+ sessions on Power Platform

The screenshot displays the Microsoft Build 2024 session scheduler interface. At the top, there are tabs for days (All days, Tue 21, Wed 22, Thu 23, Fri 24) and a total of 20 sessions. A search bar is available for finding sessions. Below the search bar, there are filters for 'Refine results', 'On-demand', 'Low-code', and 'Clear filters'. A dropdown menu shows 'Local Time (UTC+02:00)'. On the left, a sidebar titled 'Refine results' includes a 'Clear filters' button and a list of categories: AI Development, Cloud Platform, Copilot, Data & Analytics, Developer Tools, Low-code (selected), Security, Windows, Other, Level, and Programming Language. The main content area shows a list of sessions. The first session is 'Shaping next-gen development: the future of Copilot in Power Platform' on Wednesday, May 22, from 10:00 PM to 10:45 PM. It is an 'On Demand' session with speakers Charles Lamanna, Miti Joshi, Ray Smith, and Leon Welicki. The second session is 'Streamline workloads with deep integration from Snowflake' on Thursday, May 23, from 9:30 PM to 10:15 PM. It is a 'Pre-recorded' session with speaker Eric Tolotti. The third session is 'Extending Copilot for Sales with Microsoft Copilot Studio' on Thursday, May 23, from 9:30 PM to 10:15 PM. It is an 'On Demand' session with speakers Reza Assadi and Gaurav Babbar. The fourth session is 'Reimagine Enterprise Website building with Low Code using Power Pages' on Wednesday, May 22, from 1:45 AM to 2:30 AM. It is an 'On Demand' session with speakers Dipti Jaiswal and Vinay Nalam. Each session card includes a title, date, time, description, speakers, and buttons for 'Add to schedule' and 'Save to backpack'.

All days Tue 21 Wed 22 Thu 23 Fri 24 20 sessions Search sessions

Refine results On-demand Low-code Clear filters Local Time (UTC+02:00)

Show 12 results Relevance 1 2 >

### Shaping next-gen development: the future of Copilot in Power Platform

On Demand Breakout In Seattle + Online

Wednesday, May 22  
10:00 PM - 10:45 PM  
Central European Summer Time

AI is transforming the way we work, and organizations need cutting-edge AI solutions to stay competitive and meet increasing demand. Copilot in Microsoft Power Platform and Microsoft Copilot Studio enable developers to build powerful and effective applications and...

BRK211 Show more

Charles Lamanna | Microsoft  
Miti Joshi | Microsoft  
Ray Smith | Microsoft  
Leon Welicki | Microsoft

Add to schedule  
Save to backpack

### Streamline workloads with deep integration from Snowflake

Pre-recorded Online only

Whether you're running advanced analytics or developing data-intensive AI applications, Snowflake and Microsoft have developed deep integrations to make it easier for you to streamline your workloads. In this session, we'll show you how to leverage Azure Data Factory with Snowflake for effortless data orchestration, Microsoft Purview and Snowflake Horizon for data and AI discovery and...

Eric Tolotti | Snowflake

Save to backpack

### Extending Copilot for Sales with Microsoft Copilot Studio

On Demand Breakout In Seattle + Online

Thursday, May 23  
9:30 PM - 10:15 PM  
Central European Summer Time

Extending line of business copilots involves enhancing AI systems to interact with third party APIs to retrieve real-time information, incorporate business data, and take action on behalf of users. This extension is critical for businesses seeking to optimize their...

BRK207 Show more

Reza Assadi | Microsoft  
Gaurav Babbar | Microsoft

Remove from schedule  
Save to backpack

### Reimagine Enterprise Website building with Low Code using Power Pages

On Demand Breakout In Seattle + Online

Wednesday, May 22  
1:45 AM - 2:30 AM  
Central European Summer Time

Power Pages enables everyone from a low code maker to a pro developer to build websites for their business data. In this session, learn the latest and greatest enhancements of Power Pages and how customers are embracing it for their enterprise websites.

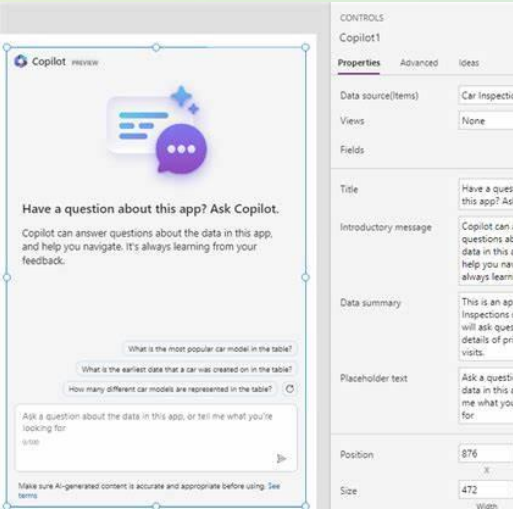
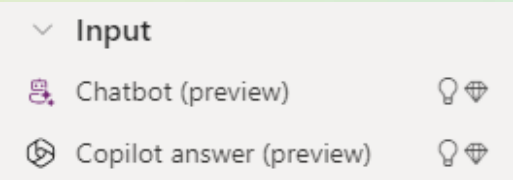
Dipti Jaiswal | Microsoft  
Vinay Nalam | Microsoft

Add to schedule  
Save to backpack

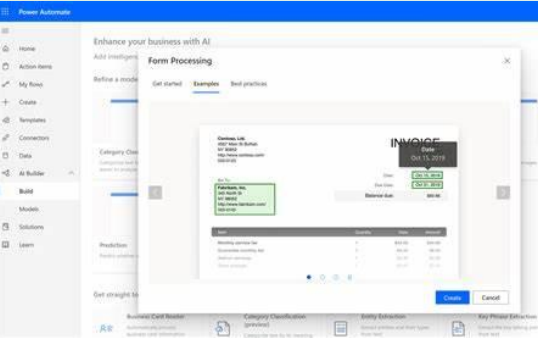
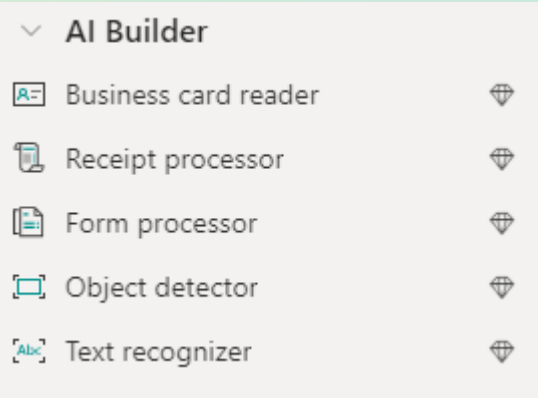
[Session scheduler \(microsoft.com\)](https://microsoft.com/session-scheduler)

# Premium Controls

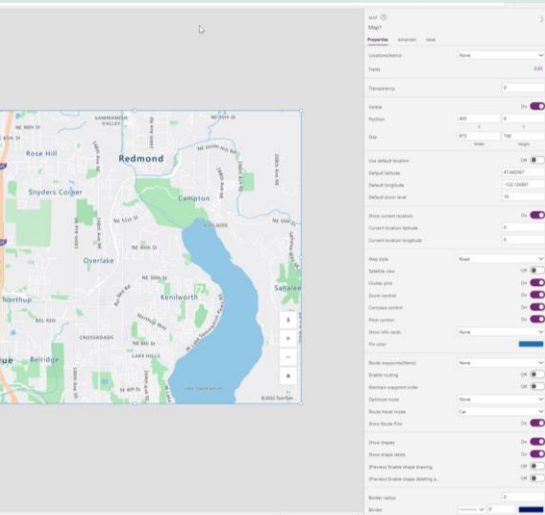
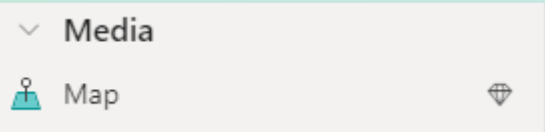
## Copilot



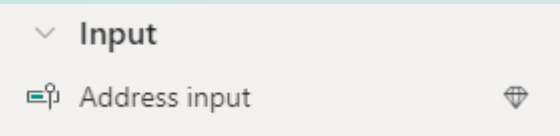
## AI Builder



## Maps



## Address input



# Governance is key to an Enterprise Scale Platform

Better Together

## Managed Environments for Power Platform

More Visibility

More Control

Less Effort

Enhanced **out-of-the-box governance capabilities** that will simplify, automate, and **streamline IT administration** of Microsoft Power Platform **at scale.**

### Power Platform Admin Center

A **unified portal** for administrators **to manage** environments and settings for **Microsoft Power Platform.**

### Center of Excellence Kit

A collection of components and tools designed to help you **get started** with developing a strategy for **adopting and supporting** Microsoft Power Platform

# What is Center of Excellence Starter Kit

## WHAT:

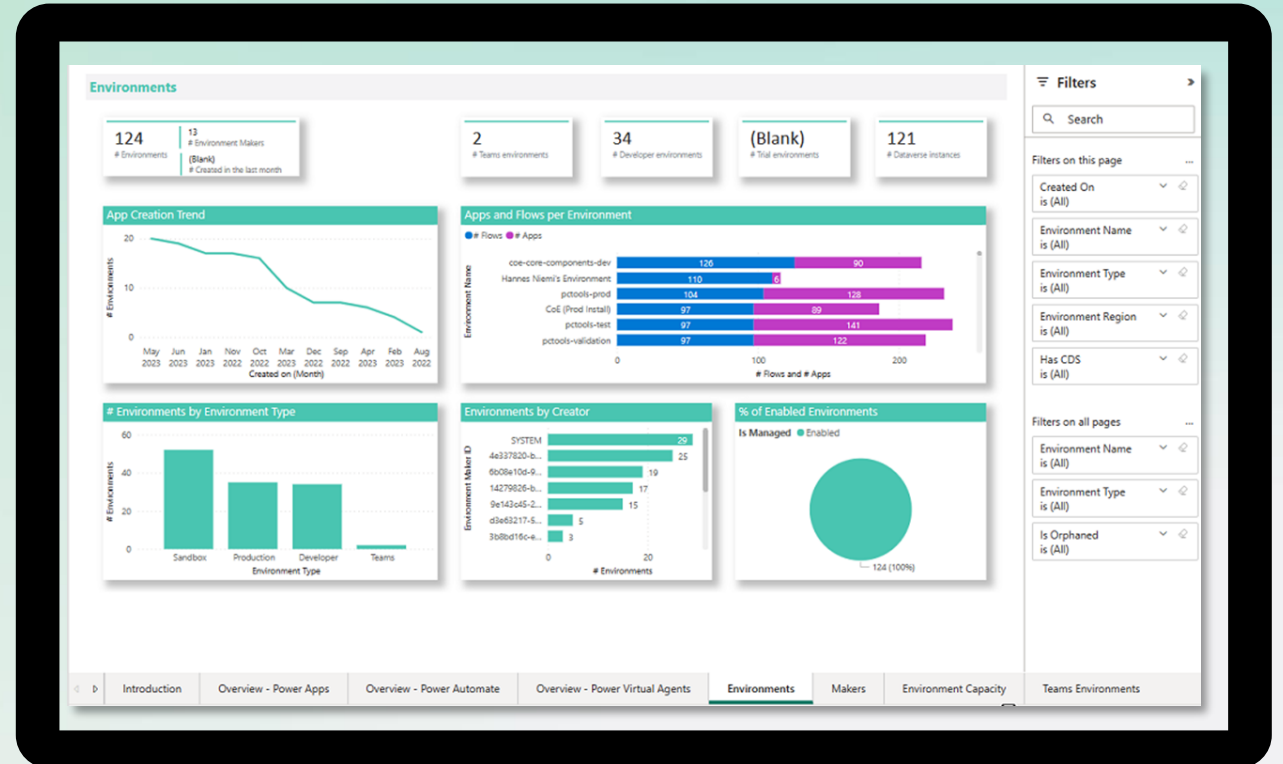
- A reference implementation of proven practices designed to give you a starting point when adopting, governing and nurturing Microsoft Power Platform
- Representative of what we have learned from customers
- Innovation and experimentation
- Implemented in an open-source low code model

## WHY:

- Learn from some of the largest organizations implementing Power Platform.
- Provide signals on what matter most to you to influence the future product roadmap

## LEARN MORE:

<https://aka.ms/coestarterkit>



# Better together

## Managed Environments

**Out of the box** governance capabilities to manage the Power Platform at scale with **more visibility, more control** and **less effort**.

<https://aka.ms/MEGuidance>



## CoE Starter Kit

**An open-source low code reference implementation** of proven practices to get started, accelerate and nurture your Power Platform Adoption, based on years of customers experiences and feedback

<https://aka.ms/coeskme>

**Getting Started:** Start with the **out of the box** Power Platform Admin Center and Managed Environments. Explore the CoE Starter Kit and adopt workflows and insights to **augment your governance strategy**

**On Going:** Follow what's new in Managed Environments, and what innovations have been added to the COE Starter Kit (Influence by joining <https://aka.ms/coeofficehours>). Extend your toolbox with homegrown or 3<sup>rd</sup> party solutions where needed.

# Real life use case



# Power Care



Christa Geller

Hearth Surgeon DIR

Ask to Angel in Teams >

Explore Insights >

Explore News and Alerts >

We love your feedback >

Other PowerApps for you >

Exit



Patient management



Bed management

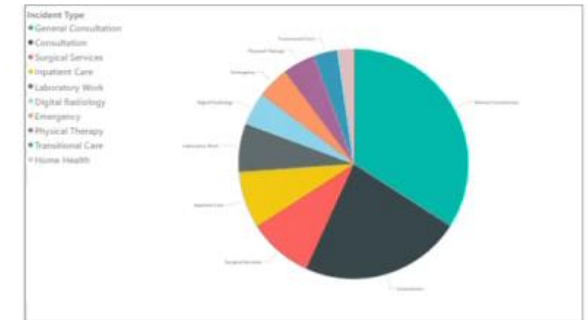


Appointments

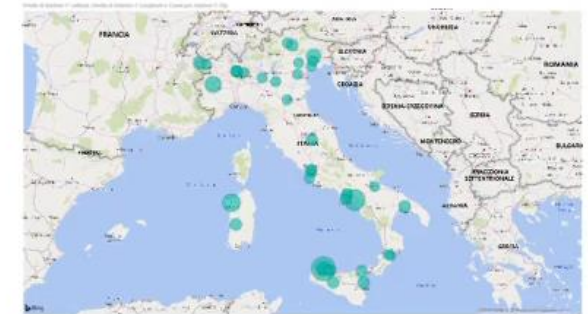


Help center

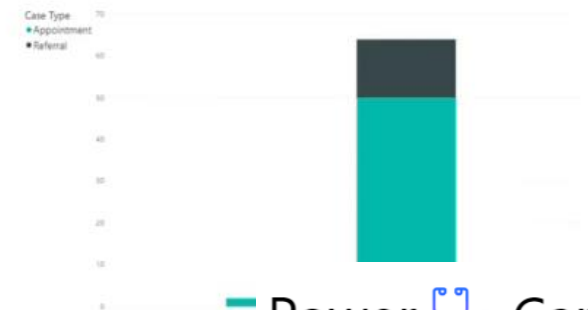
## Appointments



## Patient Visits by Location



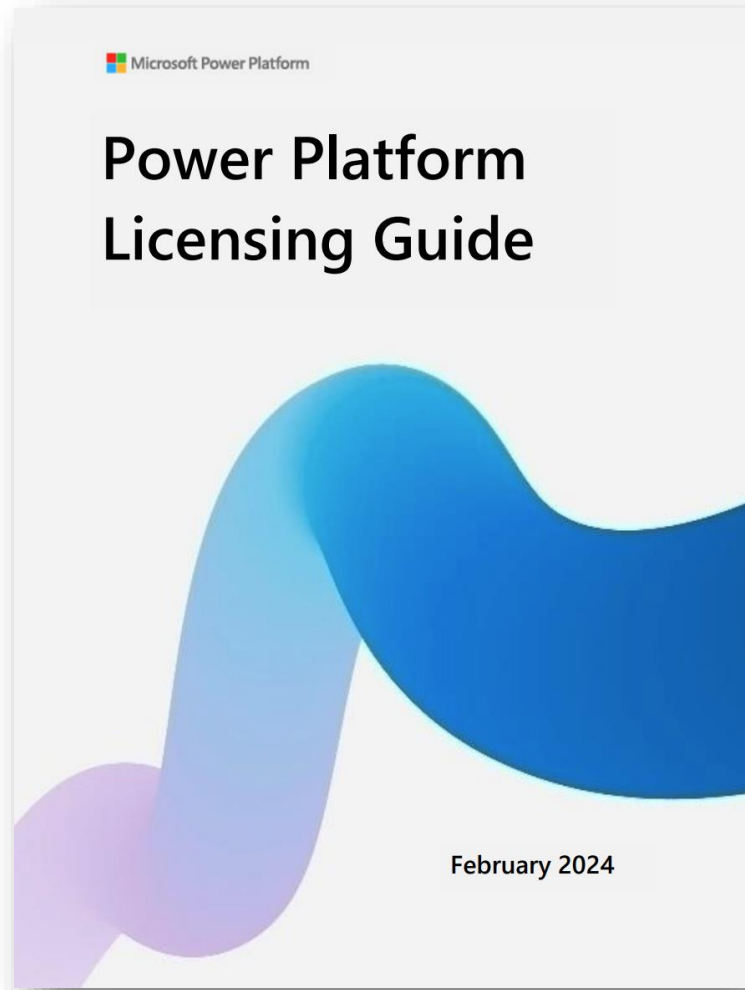
## Cases per Type



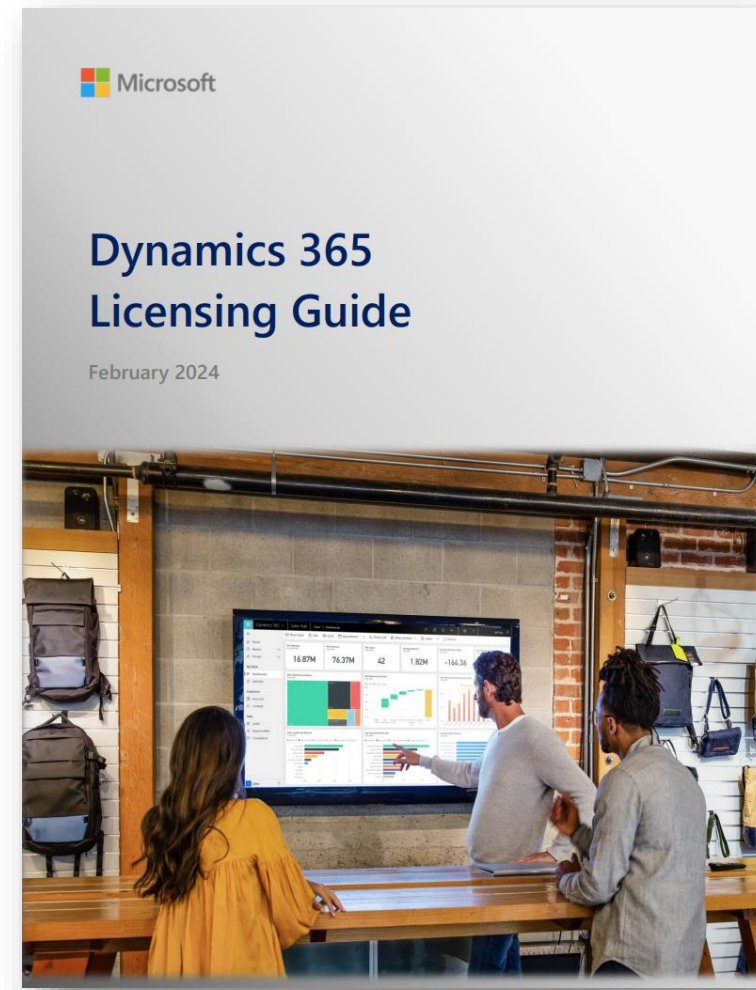
meta-analysis examines 40 years' worth of research... -Experimental drug may prevent Alzheimer's disease...-Can diabetes influen

# Resources & Events

# Licensing Guides



[Download](#)



[Download](#)



## Learn

- Get ready to deep-dive into Microsoft's Power Platform & Dynamics 365 stack with top class
- › keynotes, insightful sessions and in-depth tutorials, delivered by Microsoft leaders, independent experts, Microsoft RD's & MVP's. Raise your game with key industry insights, discuss best practices, real-world scenarios,
  - › and access expert & peer knowledge to solve your project challenges. Build your skills across Power Platform,
  - › Power Automate, Power BI, Power Apps and Dynamics 365.



## Connect

- Meet and network with 800-1500 Power Platform and Dynamics 365 peers from across Europe. After a prolonged period of virtual connection, experience the magic that happens when this community comes together.
- › Forge powerful alliances with industry leading solution providers at the EXPO and learn about solutions to help your business progress with confidence.
  - › Network with product teams, trend setters and the key decision makers in this friendly community.



## Be Inspired

- Experience the power of knowledge and connections across 3 days with a dedicated Power Platform and Dynamics 365 Conference.
- › Get future focused with the latest innovations, expert advice, product advancements and announcements to take your career to the next level. Achieve mastery in specialist topics through
  - › full-day, hands-on tutorials from proficient community leaders.





# Q&A



Thank you